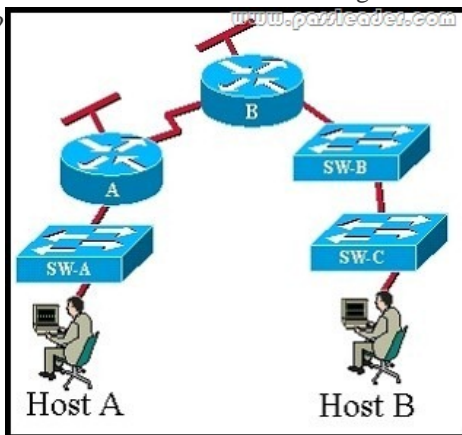


[Sep-2017 Dumps 88q 200-601 Practice Test from PassLeader Guarantee 100% Passing Exam

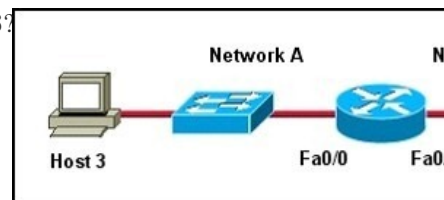
New Updated 200-601 Exam Questions from PassLeader 200-601 PDF dumps! Welcome to download the newest PassLeader 200-601 VCE dumps: <https://www.passleader.com/200-601.html> (88 Q&As) Keywords: 200-601 exam dumps, 200-601 exam questions, 200-601 VCE dumps, 200-601 PDF dumps, 200-601 practice tests, 200-601 study guide, 200-601 braindumps, Managing Industrial Networking for Manufacturing with Cisco Technologies (IMINS2) Exam P.S. New 200-601 dumps PDF:

https://drive.google.com/open?id=0B-ob6L_QjGLpekY2NnBTTzFpejQ New 200-401 dumps PDF:

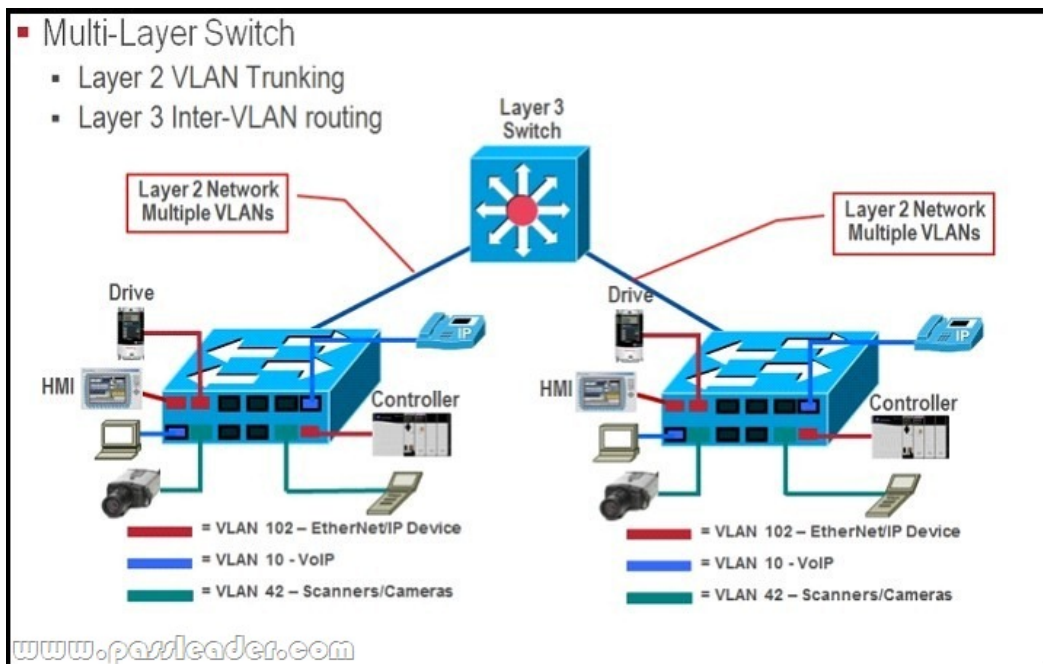
https://drive.google.com/open?id=0B-ob6L_QjGLpbzVsUGlPZ2hheDQ **NEW QUESTION 71** Refer to the exhibit. CCNA.com has the industrial network shown in the exhibit. All switches are configured as layer 2 switches and are using VLAN 1 as their management VLAN. Each VLAN 1 interface has been assigned the correct IP address. What is the purpose of assigning a default gateway to SW-C switch?



A. allows connectivity between the VLAN 1 interface on SW-C and other devices in the network.
B. allows connectivity between Host A and other devices in the network.
C. allows connectivity between Host B and other devices in the network.
D. allows the switch to pass traffic between Host A and Host B. **Answer: A** **NEW QUESTION 72** Refer to the exhibit. Host 3 on Network A is sending data to Host 8 on Network B. Which address is the default gateway of Host 3?



A. the address of the switch interface that is connected to router interface Fa0/0B. the address of the switch interface that is connected to router interface Fa0/1C. the address of the host that is connected to Network AD. the address of the host that is connected to Network BE. the address of the router interface Fa0/0F. the address of the router interface Fa0/1 **Answer: E** **NEW QUESTION 73** What are the two most relevant factors in determining the class of administration that is required to maintain the telecommunications infrastructure? (Choose two.) A. the size of the infrastructureB. the complexity of the infrastructureC. the age of the infrastructureD. the industry that the infrastructure supportsE. the physical environment of the infrastructure **Answer: AB** **NEW QUESTION 74** Which two ports does EtherNet/IP use to communicate? (Choose two.) A. TCP 44818B. UDP 44818C. TCP 502D. UDP 502E. TCP 2222F. UDP 2222 **Answer: AF** **NEW QUESTION 75** Which of the following correctly pairs the dotted decimal subnet mask with the correct number of binary bits that represent the subnet mask? A. 255.255.255.192 and /25B. 255.255.255.248 and /28C. 255.255.255.224 and /26D. 255.255.255.248 and /27E. 255.255.255.240 and /28F. 255.255.255.240 and /16 **Answer: E** **NEW QUESTION 76** Refer to the exhibit. What are three traffic and interconnection requirements for the devices in the exhibit? (Choose three.)



A. The EtherNet/IP drive connections are in a high-voltage area and need protection from electromagnetic noise, so shielded cable that is rated for 600 V is advised. B. EtherNet/IP devices such as the controller, drive, VoIP phone, and IP camera should be in the same VLAN. C. CIP traffic has the highest bandwidth requirement so it needs the highest QoS setting. D. EtherNet/IP drive traffic has high sensitivity to random drops, latency, and jitter. E. Real-time motion control and VoIP traffic can share the same VLAN with the proper QoS setting. F. IEEE1588 and PTP are important for ensuring real-time synchronization. **Answer: ADF**

NEW QUESTION 77 You are called upon to troubleshoot connectivity problems to a network device on a production floor. You have used ping and traceroute to verify that you cannot connect to the device from the management network. The network is 209.165.202.128/27 and the device has been given the IP address 209.165.202.158 and mask 255.255.255.224. You have verified that you can reach the device with your computer connected to the same switch as the device. What could be the cause of this problem? A. The device is set to the wrong subnet mask. B. The device is set to the wrong IP address. C. The device has no IP default gateway. D. The device is connected to a switchport in the wrong VLAN. **Answer: C**

NEW QUESTION 78 Which prompt is used to configure parameters for the Ethernet ports of an industrial switch? A. Switch(config-if)# B. Switch(config-if-ind)# C. Switch(config-line)# D. Switch(config-ind)# E. Switch(config-vlan)# **Answer: A**

NEW QUESTION 79 What are two benefits of a star network topology? (Choose two.) A. Disruption of the entire network is not required when adding new machines. B. Any problem which leaves the network inoperable can be traced to the central hub. C. This network type requires less cable as compared to linear bus topology. D. The performance of one of the numerous nodes cannot reflect on the performance of other nodes. E. The performance of the entire network is directly dependent on the performance of the hub. **Answer: AB**

QUESTION 80 What is the purpose of Spanning Tree Protocol? A. to prevent routing loops B. to create a default route C. to provide multiple gateways for hosts D. to maintain a loop-free Layer 2 network topology E. to enhance the functions of SNMP **Answer: D**

QUESTION 81 A small manufacturing company has a Class C network address on the plant floor and needs to create five subnets, each accommodating 25 endpoints. Which subnet mask needs to be configured? A. 255.255.240.0 B. 255.255.255.128 C. 255.255.255.192 D. 255.255.255.224 E. 255.255.255.240 F. 255.255.255.248 **Answer: D**

QUESTION 82 Download the newest PassLeader 200-601 dumps from passleader.com now! 100% Pass Guarantee! 200-601 PDF dumps & 200-601 VCE dumps: <https://www.passleader.com/200-601.html> (88 Q&As) (New Questions Are 100% Available and Wrong Answers Have Been Corrected! Free VCE simulator!) P.S. New 200-601 dumps PDF:

https://drive.google.com/open?id=0B-ob6L_QjGLpekY2NnBTTzFpejQ New 200-401 dumps PDF:

https://drive.google.com/open?id=0B-ob6L_QjGLpbzVsUGlPZ2hheDQ